

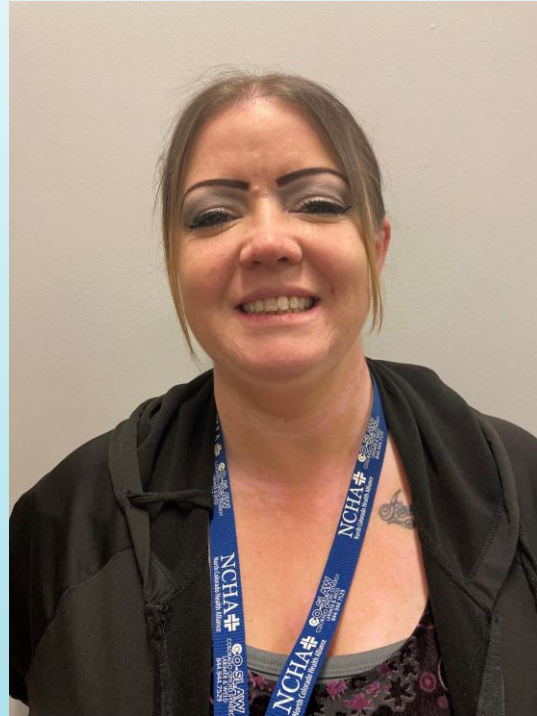


Addiction Response Team

Hans Pearson



Brandi Drtina



Dionna Berkholder



- Advocating for people in recovery
- Sharing resources and building skills
- Building community and relationships
- Developing resources
- Educating the public and Professionals
- Leading recovery groups
- Mentoring and setting goals
- Providing services and/or training

Peer Recovery

Peer support workers are people who have been successful in the recovery process who help others experiencing similar situations. Through shared understanding, respect, and mutual empowerment, peer support workers help people become and stay engaged in the recovery process and reduce the likelihood of relapse.

Core Concepts

* MAT

* Harm
Reduction

* Reducing
stigma
associated with
SUD

CO-SLAW helps people with addiction get access to medication assisted treatment in both Weld and Larimer Counties.

Our Care Coordinators assist you with your treatment process:

- Start treatment at one of our 8 clinics in Weld and Larimer County
- Provide support through the care process
- Give access to transportation
- Offer community resources


COLORADO OPIOID SYNERGY
LARIMER & WELD


North Colorado Health Alliance

**Treat Addiction. Save Lives.
For help call 1-844-944-7529**

CO-SLAW HUB AND SPOKE Network

SUD
RECOGNITION

MAT
INITIATION and
CONTINUATION

CASE MANAGEMENT
and PEER SUPPORT

Behavioral Health
Access





CO-SLAW Network Clinics

- 1 SummitStone Health Partners**
1250 N Wilson Ave - Loveland
700 Centre Ave - Fort Collins
1950 Red Tail Hawk Dr - Estes Park
- 2 FMC – Family Medicine Residency Group**
1025 Penrock Place - Fort Collins
- 3 BHG – Behavioral Health Group**
2114 Midpoint Drive - Fort Collins
- 4 Front Range Clinic**
1120 E Elizabeth St - Fort Collins
8223 W 20th St Suite 100A - Greeley
2004 W 15th St #3 - Loveland

- 5 Sunrise Community Health**
302 3rd Street SE – Loveland
(Loveland Community Health Center)
1010 A Street – Greeley (Sunrise Adelante Clinic)
2930 11th Ave – Evans (Monfort Family Clinic)
- 6 North Range Behavioral Health**
1300 N 17th Ave – Greeley
Multiple Locations – Greeley
- 7 CTS – Colorado Treatment Services**
1624 17th Ave - Greeley
- 8 Salud Family Health Centers**
1635 Blue Spruce Drive - Fort Collins
1950 Red Tail Hawk Dr – Estes Park

One Call # 844-944-7529

- For providers and community members
- MAT care coordination and treatment access
 - PEER Support Services
- CO-SLAW director triages calls to a care coordinator or PEER to ensure an individualized MAT plan and level of care
 - Community education – Naloxone distribution

Peer Support Marketing

- Community Outreach
- Create Awareness
- Networking Events
- Social Media
- Digital Media Platforms



Why Use Peer Support?

Peer support, for people struggling with addiction, improves social supports, reduces chances for relapse and increases satisfaction with overall treatment.



NorthColoradoHealthAlliance.org

844-944-7529

Peer Specialist Video's



https://drive.google.com/drive/folders/1MpRlobiURyBnc5PtPxqX_D8IT-AO6Sbb?usp=sharing

What does Peer Recovery look like?

An NCHA Peer Specialist:

Recovery Coach Trained
Working towards: Colorado Peer and Family Specialist Certifications

Has lived personal experience with Substance Use Disorder and/or Alcohol Use Disorder – As well as Recovery

Cannot be effective alone – Peer Specialists need a team of other professional behavior and health care providers

Brings a unique perspective to the workplace that cannot be learned or taught, 'street credit'

We do not have a 'one size fits all' approach when it comes to connecting with and assisting peers on their journey to recovery

Can empathize with peers in:
Pre-contemplative stages
Active SUD stages
Recovery stages of life
ALWAYS USES AN APPROACH OF HARM REDUCTION!

Peer Specialists do not pressure, coheres, or force a peer into any type of recovery

Advocating for People in Recovery

- Building relationships with peers to empower their own sense of Independence and self-sufficiency
- Attending court dates, probation appointments, Family Team Meetings with DHS
- Harm Reduction Programs and Partners: NCAP, NARCAN Vending machine
- Advocating for person-centered recovery – different for each person



EMPOWER

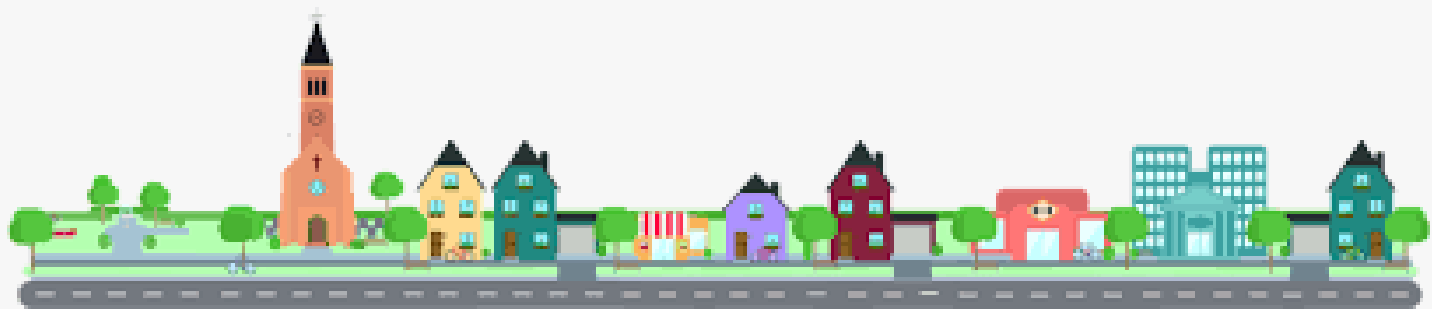
Sharing Resources Building Skills

- Utilizing The Addiction Response Team Care Coordinators
- Partner with Behavioral Health Partners: North Range, Summit Stone
- Transportation arrangements through bus passes, inteliride
- Extended recovery resources: inpatient treatment services, Outpatient services, detox



Building Community and Relationships

- Building Trust
- Shared Experiences
- Commonality



Developing Resources

- Creating Innovative Programs
- Networking with other Peer Groups
- Updating Service Providers Information
- Researching Current Practice



Educating the Public and Professionals

- Bringing a Peer Perspective
- Being a Bridge from Public to Health Professional
- Community Outreach and Awareness



Leading Recovery Groups

- Assisting Peers with access to local NA/AA/CR or other Support Groups – Attending along side for Support
- SAFER Groups
- CRAFT Groups



C.R.A.F.T.
COMMUNITY REINFORCEMENT AND FAMILY TRAINING

**ENCOURAGING HEALTHY,
CONSTRUCTIVE, POSITIVE
CHANGES FOR FAMILIES
AFFECTED BY SUBSTANCE USE.**

Call CO-SLAW at 1-844-944-7529

ESTES PARK Tuesdays 4:30 - 6:00PM Estes Park High School 1600 Manford Ave.	LOVELAND Fridays 12:00 - 1:30PM Loveland Community Health Center 302 3rd St SE.	GREELEY Coming Soon	FORT COLLINS Mondays 5:30 - 6:30PM Summitstone Health Partners 700 Centre Ave.
--	---	-------------------------------	--

Mentoring and Setting Goals

- Peer Mentoring is Person Driven and Goal Driven
- Introduction – Sharing Lived Experience
- Stages of Change
- Meet People where they are
- Strength and Skills Based
- Harm Reduction
- Holistic Approach
- Continuous Check-ins
- SMART



Providing Services and/or Training

- Working towards Goals
 - Life Training – Getting Recovery BUFF!
 - Referrals
 - End to End Care Coordination and Peer Support
 - Working with Service Providers
-
- Naloxone Supply, Education and Training
NCHA Mailing program (Larimer and Weld counties)

<https://northcoloradohealthalliance.org/naloxone/>

